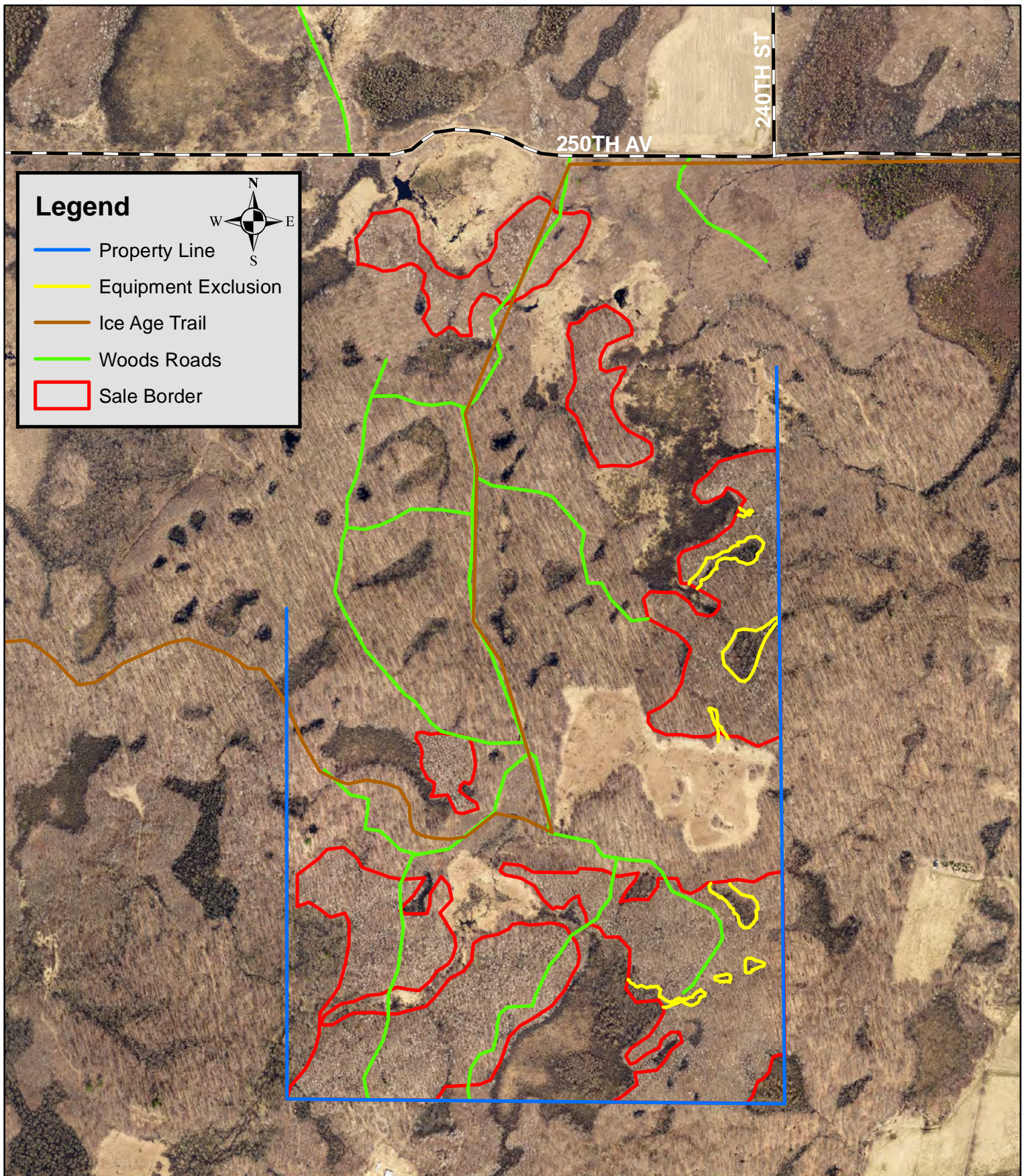


# Tract 6-24 Rookie of the Year

Approximatly 80 acres aspen coppice





## CHIPPEWA COUNTY TIMBER SALE TRACT 6-24

### **Rookie of the Year Aspen**

(approximately 80 acres)

Located in T31N R7W Section 2, Town of Cleveland

The table below contains an estimate of the amount of each species/product. There is no minimum bid for each species; however **the total minimum bid that is acceptable for Tract 6-24 is \$ 98,500.00.**

Species	Amount	
	Tons	MBF
Aspen cordwood	3500	
Mixed HW cordwood	1900	
Mixed HW Logs		95

### **Sale Area Description:**

This sale will be a clear-cut to coppice the aspen in the stand. The boundaries of this sale are marked with red paint line with yellow representing equipment exclusion areas. Trees can be cut to the edge of the wetland but No equipment operation is allowed within 15 ft of wetlands. There are existing woods roads for access to this sale. The Ice age trail will remain open and must remain clear of debris.

### **Cutting Requirements:**

Aspen Harvest Areas: (80 acres) Cut all trees one inch in diameter and larger. **Do not** cut boundary trees or conifers.

### **Special Conditions:**

- The contract length is 2 years.
- No harvesting activity will be allowed if rutting occurs.
- Ice Age Trail will remain open during operation and must be clear of debris.
- *Leave all snags (dead trees) unless they present a safety hazard. Use caution to limit the disturbance of Course Woody Debris (CWD) on the forest floor.* (ie) down logs greater than 12 inches in diameter.
- All hardwood logs, 10" or larger on the small end will be charged at the appropriate saw log stumpage rate.
- All cordwood shall be utilized to a 4" top diameter.
- All slash must lie within two feet of the ground.
- All logging debris must remain within the sale boundaries and kept from wetlands and trails.
- All landing locations must be approved by the county.

**Map Located on the Back**